



NHS

West Hertfordshire
Teaching Hospitals
NHS Trust



Bringing our plans to life St Albans City Hospital

18 August 2022



Welcome

Thank you for joining us

- » housekeeping

Today's briefing

- » our vision
- » our clinical model

Questions

- » please do ask questions as we go along

Tour

- » 30-40 minute tour
- » feel free to ask questions on route



Your presenters today



Clare Parker
**Chief Strategy
Officer**



Paula King
**Head of Nursing
(surgery, anaesthetics
and cancer)**



Louise Halfpenny
**Director of
Communications**



Modern hospital care is changing

- hospital care is about more than beds and buildings – it's about how we organise care around our patients
- national and international best practice recommends separating planned and emergency care
- we work with system partners to avoid hospital admission – and – if patients are admitted, to reduce their length of stay
- digital technology means that we can safely monitor patients in their own homes, saving hospital visits and promoting independence
- modern booking systems and better ways of working put the patient in control of their own healthcare – making it personalised
- treatment pathways are developed on evidence-based care and standardised methods which drives up quality and clinical outcomes



How St Albans fits in our plans for three networked hospitals providing specialist, emergency, urgent & routine care

St Albans City

Planned surgery

- expanded range and volume
- rapid diagnostics
- one stop clinics and pathways
- cancer support services
- MRI, CT, SPECT CT
- lower risk of cancellations

Also:

- urgent care hub
- routine outpatient clinics
- some maternity services

Hemel Hempstead

Planned medical care

- older people's care and long term conditions
- one stop clinics (pathways)
- new and upgraded diagnostics: DEXA, MRI, CT

Also:

- urgent care
- routine outpatient clinics
- some maternity services

Watford General

Emergency and specialist care

- 'same day' emergency care
- complex diagnostics
- women's & children's services
- new inpatient accommodation with high ratio of single rooms

Also:

- urgent care
- routine outpatient clinics



Improvements for patients

Across the trust

- new ways of working with partners in primary care
- providing more one stop clinics and pathways
- virtual clinics
- remote monitoring

Outpatients at St Albans

- adult surgical outpatients – will reduce patient travel to different sites and increase clinical team approach and availability
- enhance cancer services to increase one stop care
- endoscopy capacity will triple
- centralise and expand diagnostic services to improve access and care pathways

Inpatients at St Albans

- six operating theatres – currently there are five and a procedure room
- improved availability of surgical teams on site



Plans for St Albans City Hospital

- specialise in planned surgery
- provide better and faster diagnosis following a significant upgrade to MRI and CT provision
- offer a new SPECT CT service (a medical imaging and treatment using a gamma camera) – supporting a wide range of patients on cancer pathways
- seven days a week diagnostic service
- new endoscopy unit to support cancer care and other specialties
- gastroenterology and associated hepatology services
- better breast cancer services (more one stop pathways – already happening)
- nurse-led ‘integrated urgent care hub’ opens in October 2022 , run by Herts Urgent Care – likely to be 9am - 6pm seven days a week, accessed via GP or NHS111 pre-booking



Plans for St Albans City Hospital - continued

- be the location for an increasing number of 'one stop' clinics (and pathways)
- offer cancer-related support services and an information centre
- 'soft support spaces' for those receiving diagnosis
- newly built six-room endoscopy unit
- expansion if needed in future eg. space for further mammography scanner
- new multidisciplinary team rooms
- new teaching and training rooms
- robot, telemetry, remote learning with live-streaming for clinicians in other parts of the country

being part of a national funding programme may result in changes beyond our control

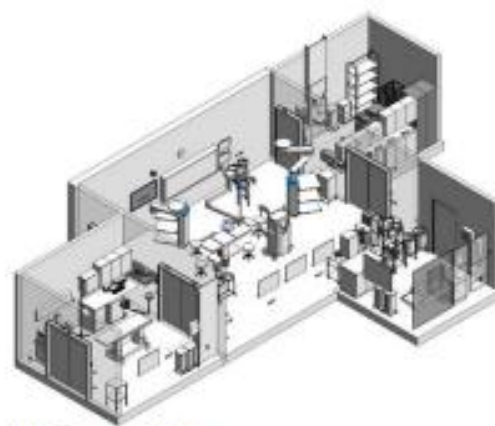


New and refurbished buildings

Key

- New building
- Existing building
- Building refurbished

Indicative 3D models
New facilities



New Diagnostic Centre

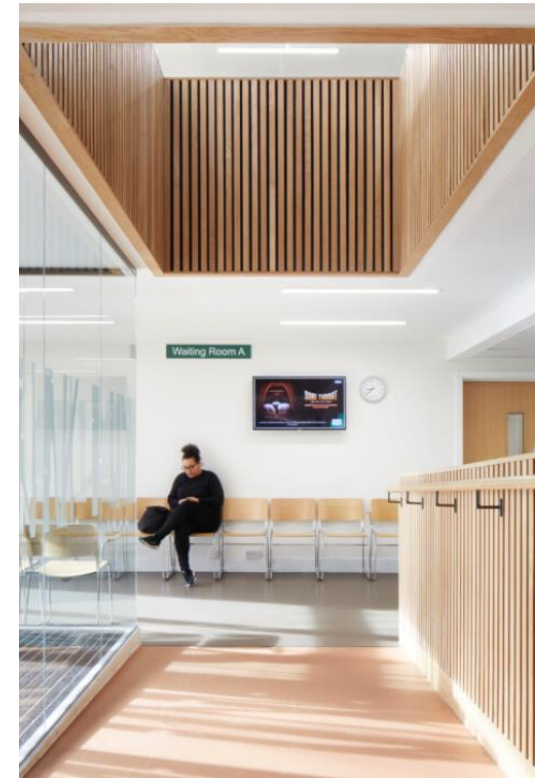
New Operating Theatre

New Endoscopy Centre



We have applied for outline planning permission

- to refurbish the existing buildings and build some new sections.
- application is with St Albans City and District council
- application is open to comments until 26 August 2022 at www.planningapplications.stalbans.gov.uk





Our next steps (after OBC submission)

NHP & Treasury
approve OBC

Contractor
appointed & full
business case
developed



Final funding & main
build contract agreed

Enabling and ground works

Construction starts



New and refurbished
hospital buildings open!



Meanwhile ...

- being alert to other sources of funding where this might be possible for smaller elements of our overall programme
- ensuring current updates compliment our future redevelopment plans wherever possible
- ensure money is put to good use for the future as well as the present
- carrying out refurbishments when needed and not just waiting for the redevelopment funds
- keeping the conversation going with clinical staff to ensure that our designs continue to match plans based on great patient care
- engaging on new and emerging clinical models so that our decisions are informed by our patients

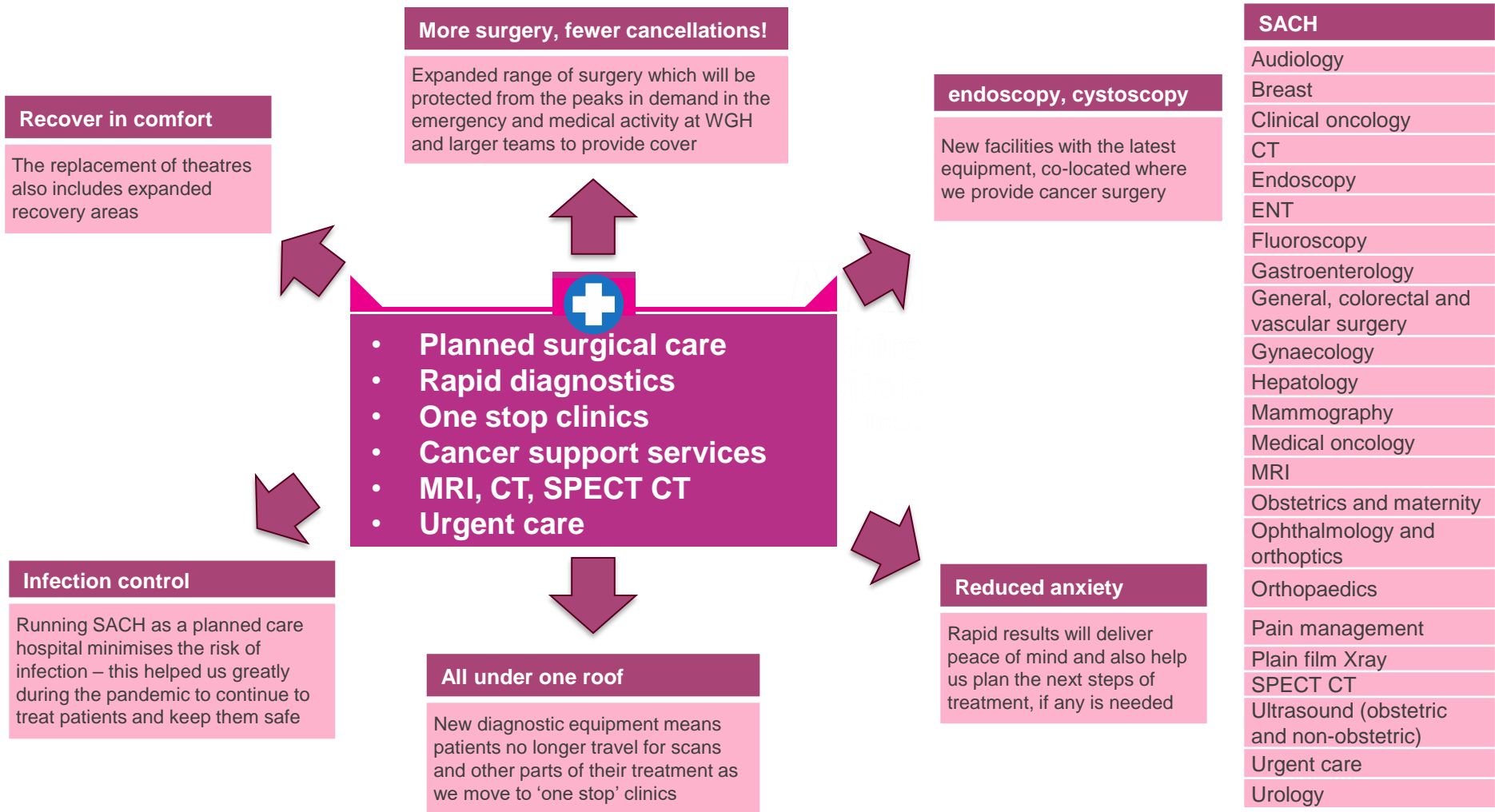


A note on emergency care

- modern emergency care is also changing – nationally and internationally
- has become a highly specialised form of medicine needing the input of a wide range of specialties and facilities to support early assessment
- small satellite units at all three hospital sites no longer considered safe or sustainable
- important emergency department is linked to the rest of the hospital - vital departments such as intensive care and paediatrics
- 24-hour service with appropriately trained and expert staff
- access to all the resources necessary to deliver optimum and safe care
- specialists available for rapid diagnosis and treatment for emergency cases
- emergency care will continue to be based at Watford General

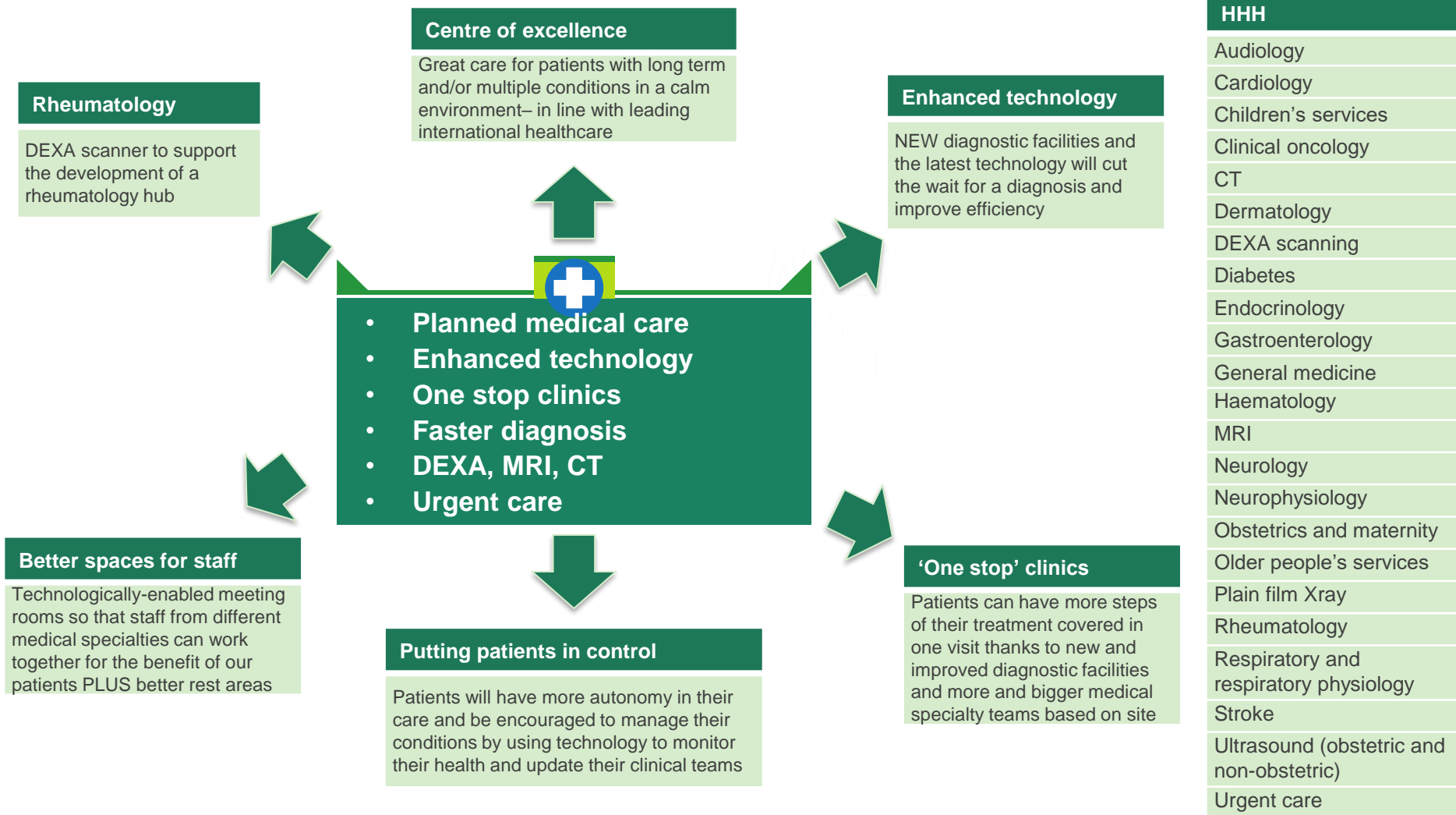


Benefits for patients...SACH





Benefits for patients...HHH





Benefits for patients...WGH

Sustainable and spacious

Our new building will be environmentally friendly and there will be green spaces and also more spacious patient areas

Boosting birth experience

Our new women and children's building will have specially equipped rooms for antenatal, labour and postnatal care – meaning mum and baby can stay put

Expanded emergency

Bigger unit, better equipment and more assessment space so that specialists come to patients and not vice-versa

Fighting infection

A high ratio of single rooms and the latest design and ventilation will be used to keep us all protected from infection

-
- Up to 90% new buildings
 - Expanded emergency care
 - Technology-enabled site & services
 - Complex diagnostics
 - Vastly improved patient & staff areas
 - Services organised better together

Family planning

Paediatric services will be in the main building with child-friendly design

Safe and sensible

We will reorganise how services are located, e.g. all acute services in the same building – making sure the right care is on hand when needed

WGH

Audiology
Cardiac MRI
Cardiology
Children's services
Clinical oncology
CT
Cystoscopy
Dermatology
Diabetes
Emergency
Endocrinology
Endoscopy (urgent)
ENT
Gastroenterology
General medicine
General colorectal and vascular surgery
Gynaecology
Gynaecology oncology
Fluoroscopy
Haematology
Hepatology
Medical oncology
MRI
Neurophysiology
Nuclear medicine
Obstetrics and maternity
Older people's services
Ophthalmology and orthoptics
Oral surgery and dental
Pain management
Plain film Xray
Rheumatology
Respiratory and respiratory physiology
Stroke
TIA (transient ischaemic attack – or 'mini stroke')
Ultrasound (obstetric and non-obstetric)
Upper gastrointestinal surgery
Urgent care
Urology



NHS

West Hertfordshire
Teaching Hospitals
NHS Trust

Questions



Further questions?

NHS

westherts.redevelopment@nhs.net



Subscribe to our newsletter, **Blueprint**



Our monthly newsletter **Blueprint** is designed to keep local residents, patients and our health and social care partners up-to-date on our hospital redevelopment plans as well as news from across the trust.

If you would like to sign up to the newsletter, please email westherts.redevelopment@nhs.net

You can view previous editions of the newsletter on our website: <https://www.westhertshospitals.nhs.uk/about/redevelopment/furtherinformation.asp>



Tour

- please stay with the group
- wear face covering if possible

NHS

West Hertfordshire
Teaching Hospitals

NHS Trust



Thank you

westherts.redevelopment@nhs.net

Find us online @WestHertsNHS



www.westhertshospitals.nhs.uk